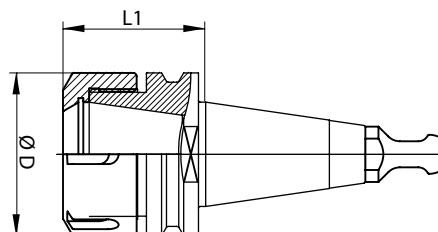


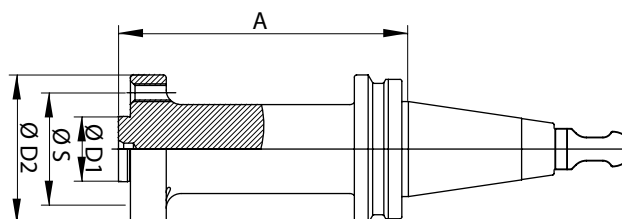
ISO30 PORTAPINZA ISO30 COLLET HOLDER

Dati tecnici ed immagini sono indicativi. Semar si riserva di apportare aggiornamenti senza obbligo di preavviso.
Technical data and drawings are only for information purposes. Semar reserves the right to make changes without prior notice.



articolo item	descrizione - description	L1	D	ghiera nut	tirante pull stud
004A001	Ass Mandr ISO30 ER32 Dx + Codolo + Ghiera Eq Conc Tool Holder ISO30 ER32 Rh + Pull Stud + Balanced Nut	44	50	908B002	100B001
004A056	Ass Mandr ISO30 ER32 Sx + Codolo + Ghiera Eq Conc Tool Holder ISO30 ER32 Lh + Pull Stud + Balanced Nut	44	50	908B011	100B001
004A020	Ass Mandr ISO30 ER40 Dx + Codolo + Ghiera Eq Conc Tool Holder ISO30 ER40 Rh + Pull Stud + Balanced Nut	51	63	908B003	100B001
004A050	Ass Mandr ISO30 ER25 Dx + Codolo + Ghiera Eq Conc Tool Holder ISO30 ER25 Rh + Pull Stud + Balanced Nut	56	42	908B018	100B001

ISO30 PORTALAMA ISO30 BLADE HOLDER



articolo item	descrizione - description	A	ØD1	ØD2	ØS
004A052	Ass Albero ISO30 Portalama Ø22 H75 M6x5 + Codolo Blade Holder ISO30 Ø22 H75 M6x5 + Pull Stud	97,1	22	50	38