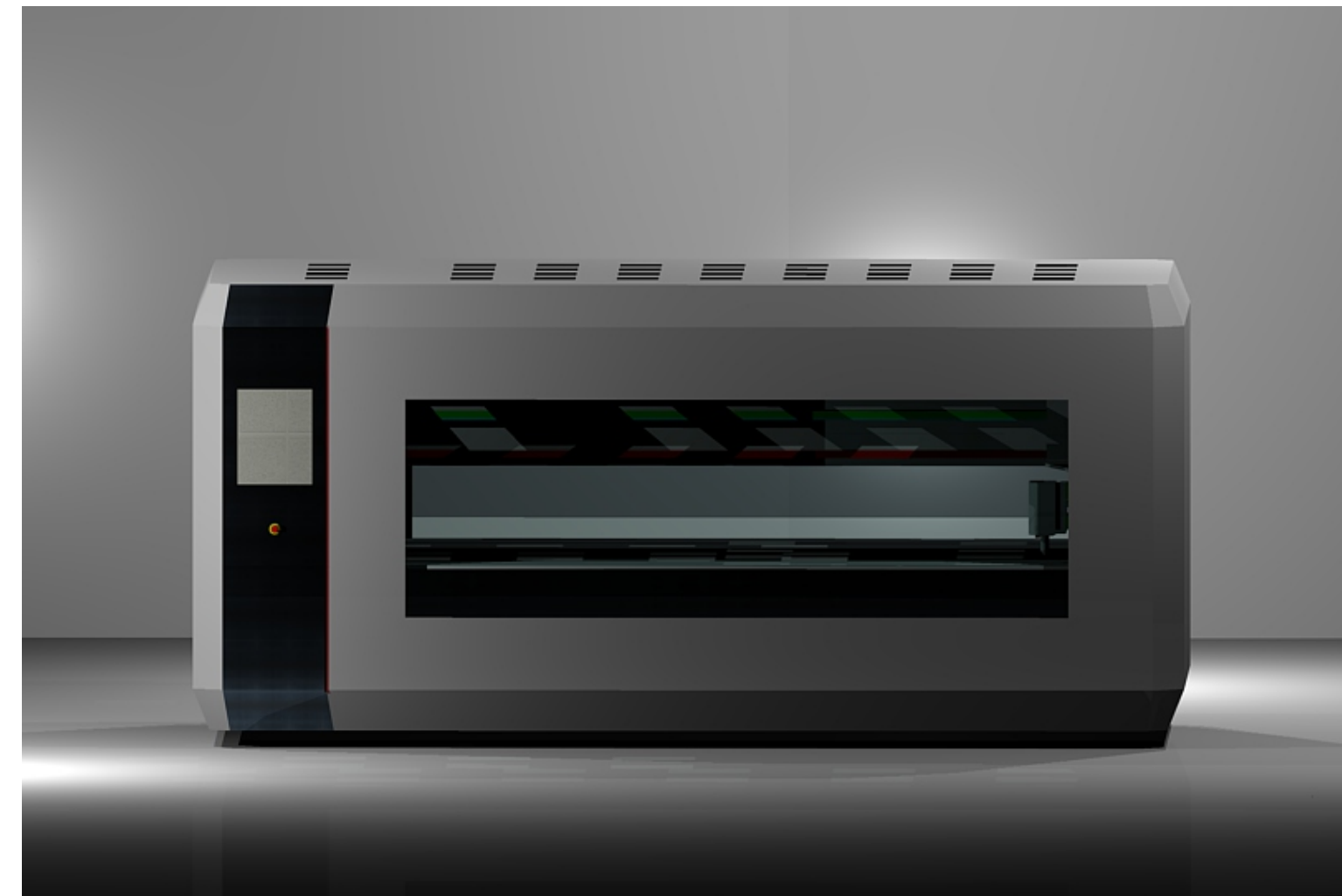




PK 1515
PK 2512
PK 3020
PK 4520
PK 6020

# Cnc Cutting Plasma PK Series



## Highest performance and productivity

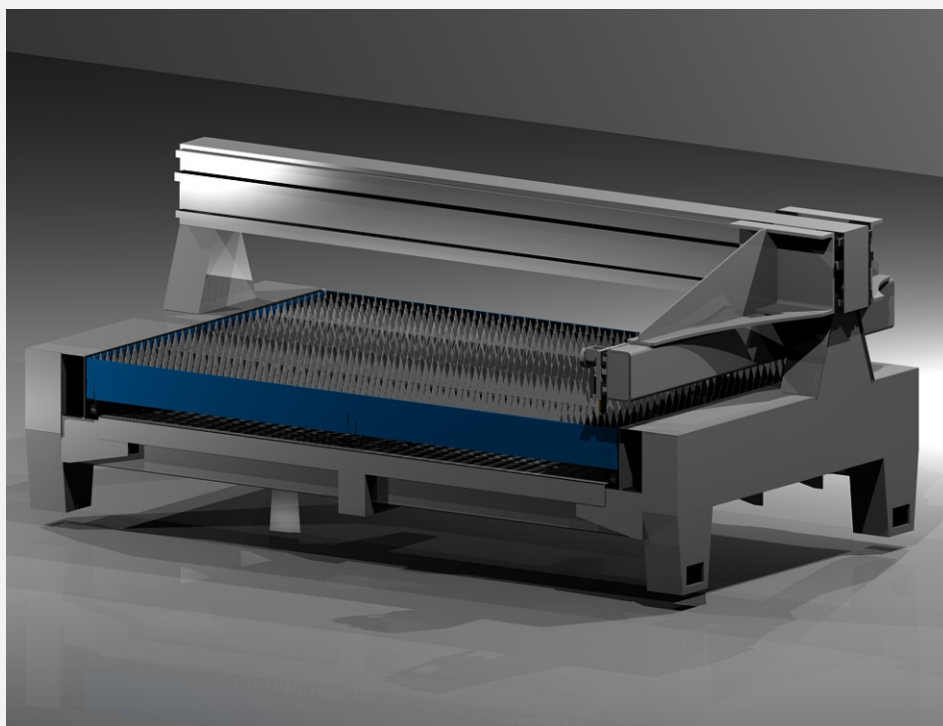
The laminated profiles welded in argon gas offer benchmark for highest rigidity

Improved structure concept for X axis offer large clearance of work table.

Rigid Y-axis concept in whole range of travel

FEM-optimized design & construction

Precision in every component and detail

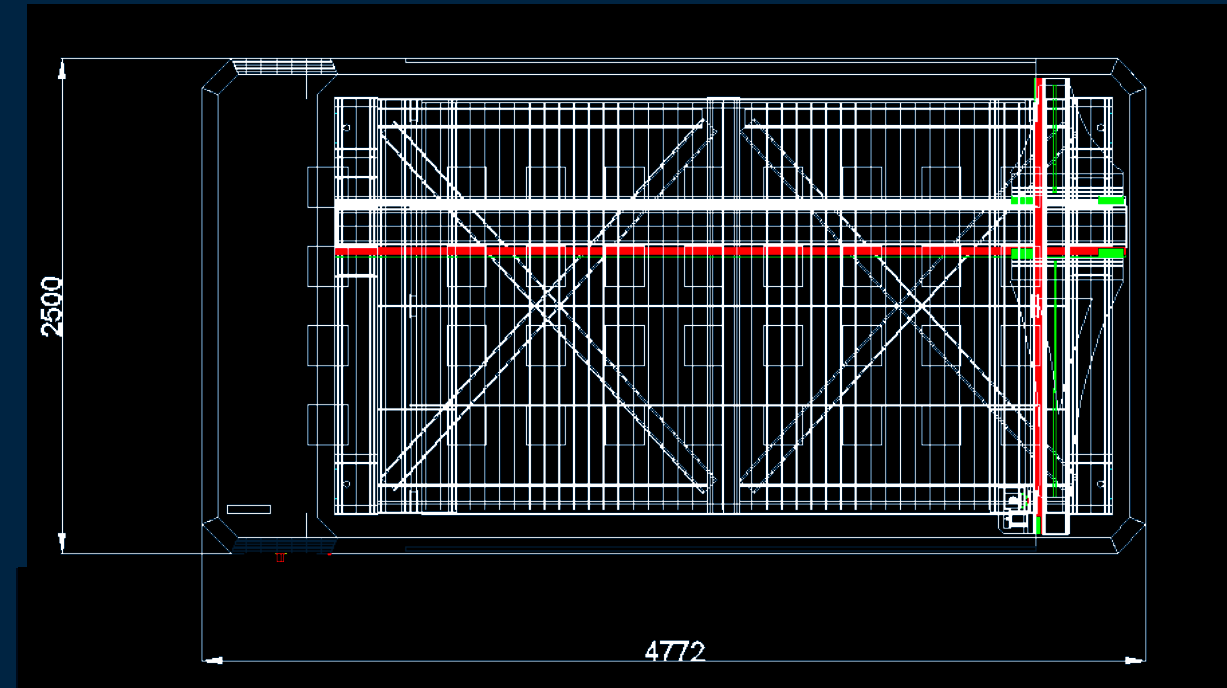


### Highlights

Maximum stiffness with  
welded laminated profiles

Precision and stability

Powerful plasma system  
from Hypertherm



Accuracy of positioning in all axes of 20 µm without linear scales.

Thermal compensation ensures stable, precise and highest quality production process

Gudel made in Swiss transmission - 4 µm class of precision with hardened surface

Sophisticated design and large working area - combined in  
the PK series

Improved ergonomics for easy handling and loading of heavy workpieces

Huge table with 3100 x 2100 mm for cutting of parts up to 1,200 kg

Small foot print 11.9 m<sup>2</sup> for PK3020

# PK Series

## Technical Area

### Work Area

Max. X travels	3,100 mm
Max. Y travels	2050 mm
Max. Z travels	150 mm

### Lift dimensions

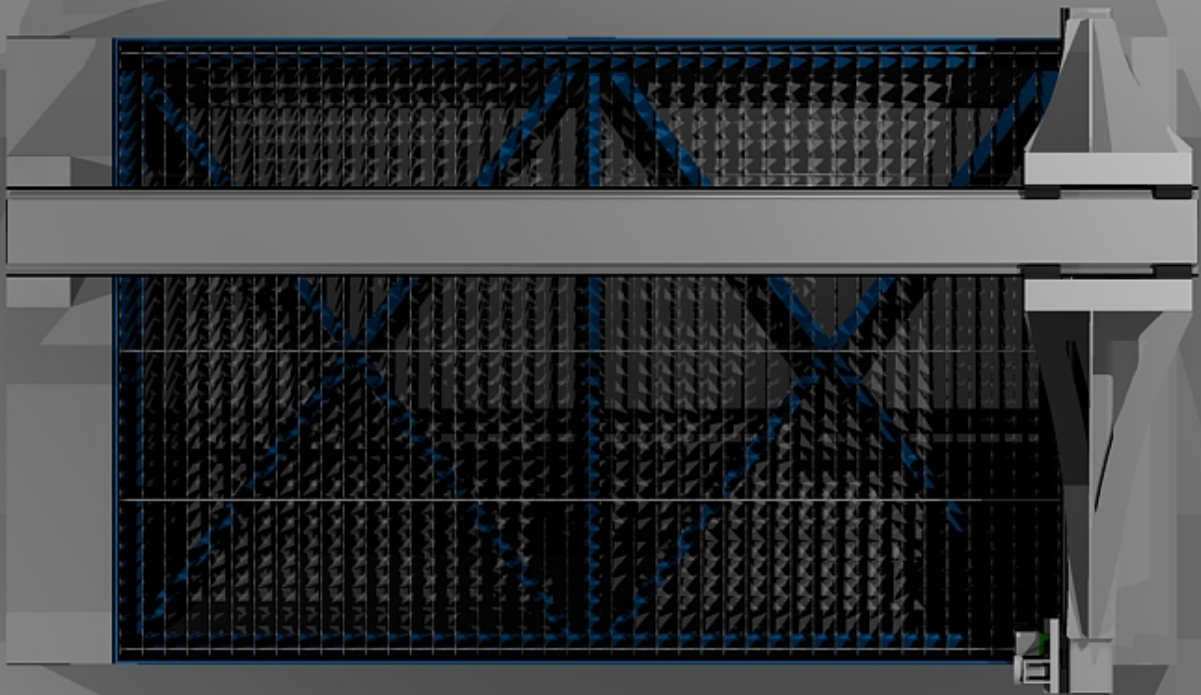
Max. table load	1,200 kg
Lift length	3,200 mm
Table width	2,100 mm

### Plasma cutting

Standard Hypertherm 65	max. 15 mm
Max. thikness (Option)	max. 25 mm
Drive power rating (100% DC)	9 kW (AC)

### Rapid traverse

Max. X axis	60 m/min
Max. Y axis	60 m/min
Max. Z axis	60 m/min



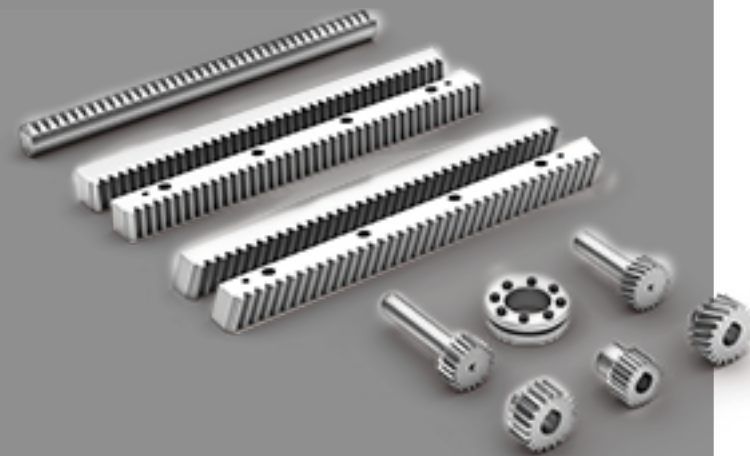
# PK Series Function

## Transmission

Precision in all shapes and sizes

Perfect for high-performance drive units

Quality offered by



# GÜDEL



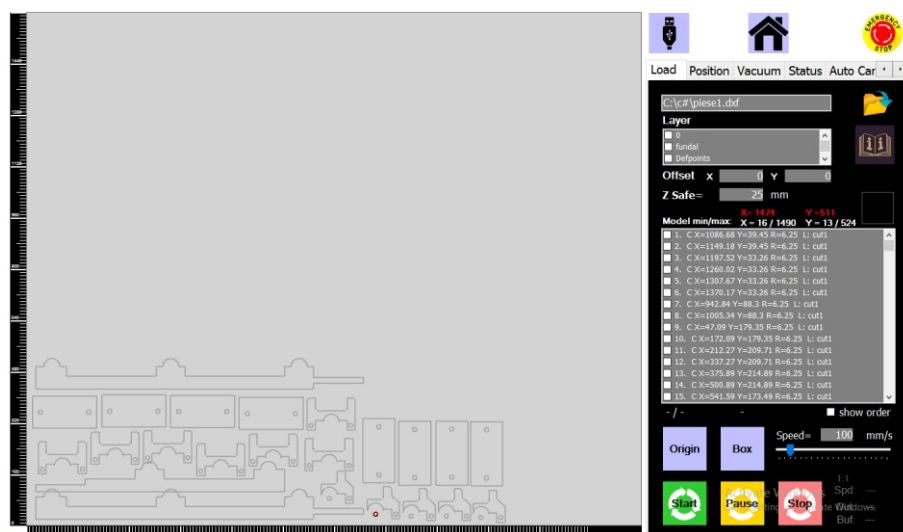
## Software

User friendly

Simplified solution  
for Plasma application

Direct import DXF files

made by  
Intelligent Labs Romania



## Linear

Precise, Reliable, Future-proof

20 um precision class

Quality offered by

**Rexroth**  
Bosch Group



# Quality

assured by hi-class brands ...

## Servomotors

Panasonic MINAS A6

High-precision encoder, 23 bits/revolution;  
8.38 million ppr

Max. rotational speed: 6500rpm

Low cogging torque



**Panasonic**



# PK Series

Plasma Sources

Highest cut quality  
and productivity



### Hypertherm 65

Mild steel up to	16 mm
Stainless steel	12 mm
Aluminum	12 mm

### Hypertherm 85

Mild steel up to	20 mm
Stainless steel	15 mm
Aluminum	15 mm

### Hypertherm105

Mild steel up to	25 mm
Stainless steel	18 mm
Aluminum	18 mm

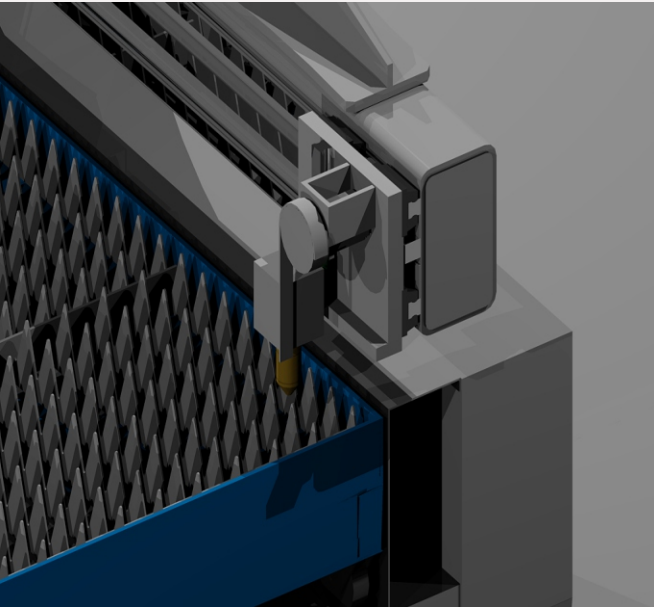
### Hypertherm 125

Mild steel up to	32 mm
Stainless steel	20 mm
Aluminum	20 mm



### THC function

- automatic GAP sensor  
direct drive by servomotor Panasonic
- Z axis transmission with  
synchronous-belt at speed of 10 m/s
- Collusion function with high speed  
retraction



# PK Series

## Order List

### Model range

#### PK 1515

Max. X travels	1,550 mm
Max. Y travels	1,550 mm

#### PK 2512

Max. X travels	2,550 mm
Max. Y travels	1,250 mm

#### PK 3020

Max. X travels	3,100 mm
Max. Y travels	2,050 mm

#### PK 4520

Max. X travels	4,600 mm
Max. Y travels	2,050 mm

#### PK 6020

Max. X travels	6,100 mm
Max. Y travels	2,050 mm

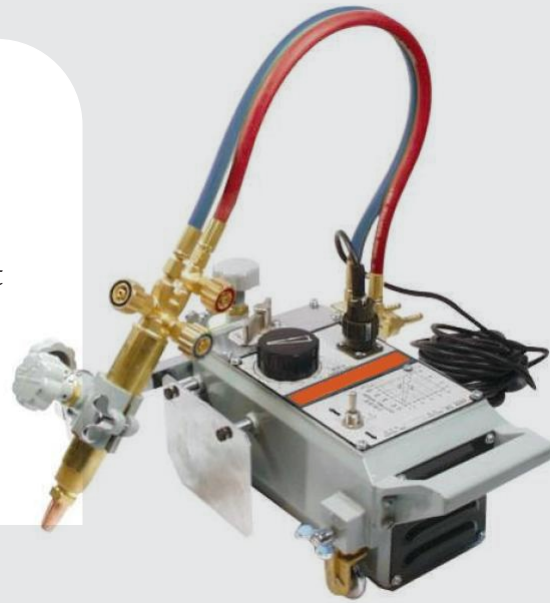


# PK Series

## Options

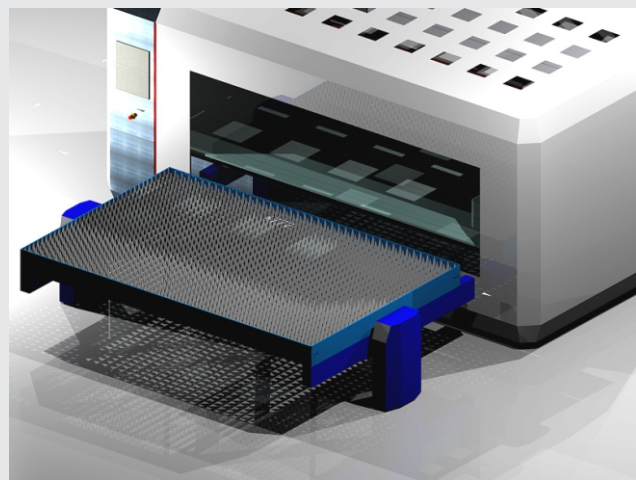
### Oxy cutting

- \* complete independent Z axis
- \* capacitive sensor for automatic height
- \* cut up to 75 mm thickness
- \* proportional valve driven by software
- \* safety interface



# Quality

assured by hi-class brands ...

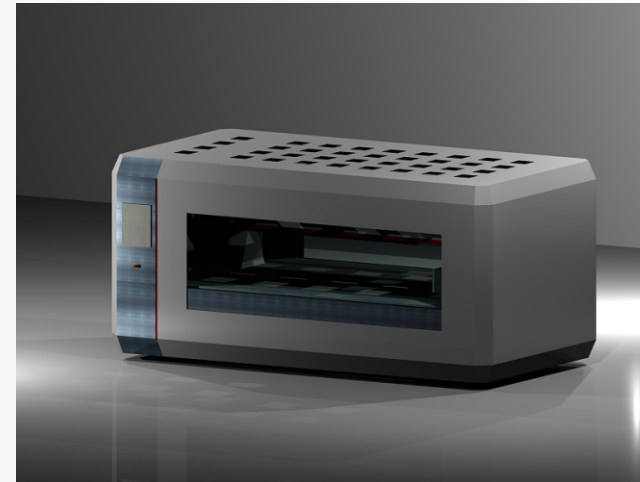


### Automatic change lift

- \* external lift for more efficient production time
- \* height control for change lift
- \* PLC independent with externals control
- \* safety barrier systems

### Housing

Machine housing is an option that offers a solution for preserving a clean working environment



### Exhaust System

The SCS is a self-cleaning central filter optimized for welding fume extraction systems that require up to 7000 m<sup>3</sup>/h for extraction arms and 9000 m<sup>3</sup>/h for general filtration such as push-pull systems.

# PK Series

## Controller option

## Notes

---



### CNC Fanuc 0i-MD

Designed to be extremely user-friendly, FANUC's new iHMI makes operating CNC machines easy and efficient. The new panel is flat, features ergonomically positioned keys, completely redesigned hardware and a brand new user interface.

Conversational automatic programming function with process menu

Manual Guide and interactive programming

File display and note function for accessing operating instructions, drawings and texts

User – friendly operator guidance screen with clear machine status display

\* increase transfer speed up to 80 m/min

\* increase accuracy with nano metric technologies

# Quality

made in Japan

